

# Compact Lifter



***Proven design has become a staple to the waste haulers across the country.***

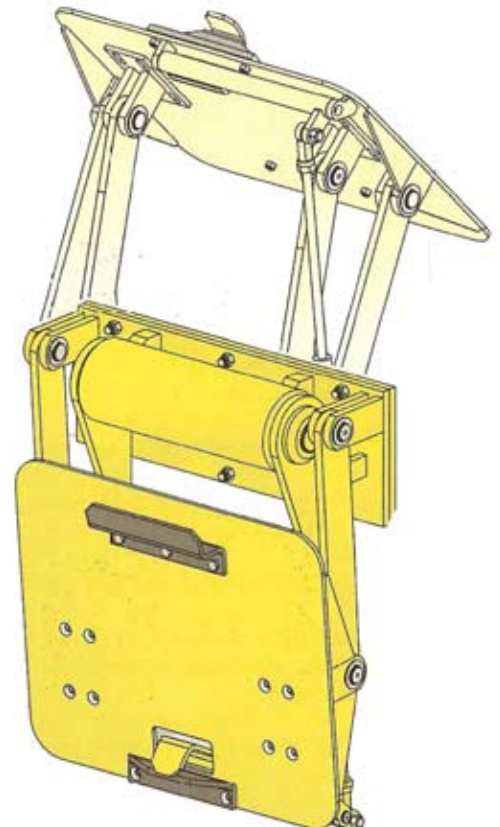
- Versatile Design
- Deep Dumping Action
- Simple Operation
- Reliable Service History

The Compact lifter series is second only to Tuck-away Lifter in popularity throughout the refuse industry. These lifters offer a rugged design with a thin profile that works well in a wide range of applications.

Whether mounted to a front load carry-can, rear-loader, or side-loader, these models are workhorses that lift carts high and deep for maximum dumping performance. The 20K helical rotary actuator offers a smooth dump motion and a dependability that puts the competition to shame.

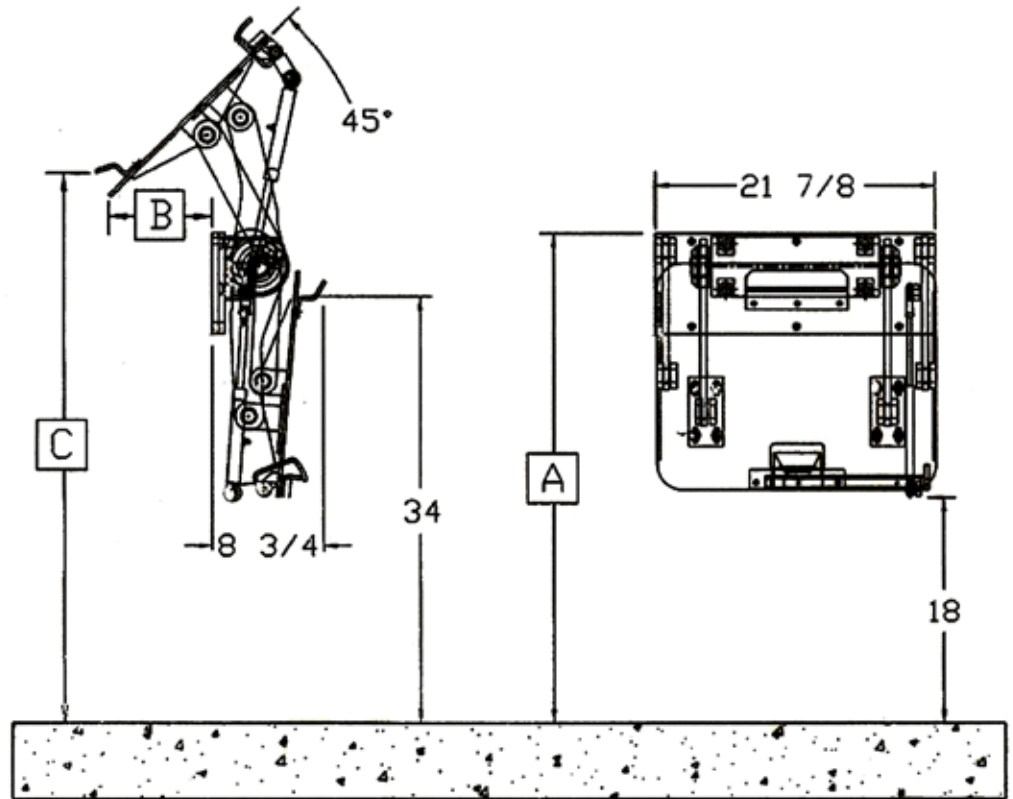


Rubber coated upper saddle and lower stops, combined with a spring-loaded lower latch protect your cart investment, while the maintenance requirements are simple and straight-forward.



***Models D6070-20k & D6071-20k***

# Compact Lifter SPECIFICATIONS



	A	B	C
D6070-20K	39 1/2"	8 1/4"	43 3/4"
D6071-20K	43 1/2"	9 1/2"	52 1/4"

- This profile is perfect for carry-ons and siders
- Weight capacity: 350lbs@ 1950 PSI
- Full compatibility to 60-95 gallon plastic US-style carts
- 6-8 second cycle time @ 2.5 GPM
- Splined ends on Actuator shaft for maximum torque transmission and long life
- PVC-coated upper hook and lower stop
- 20k Helical Rotary Actuator rated @ 3,000 PSI max
- Steep 45 degree dump angle
- 1/2" A36 HRS driver and adler arms
- 1/2" A36 HRS rear mounting plate for easy servicing
- 2-year limited warranty